

The Ottawa Citizen
Reporter - Randall Denley

Ray Essiambre has an analysis that is so startlingly simple, and important, it ought to be memorized by every Council member.

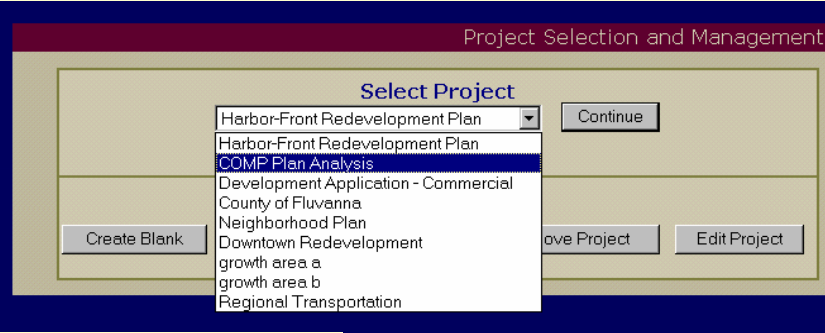
New Mexico
Ken Hughes, Local Government Division, State Of New Mexico

"Your InfraCycle software can offer a sound approach for elected officials to evaluate development at what scale and on whose dime"

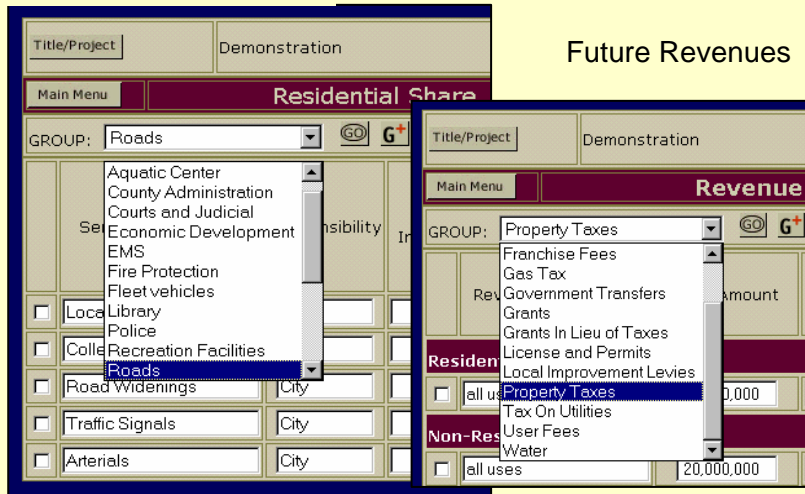
Ottawa-Carlton Home Builders Association
John Herbert - Executive Director

"It is a very powerful tool to test various forms of urban growth".

InfraCycle is scalable for analysis of regional, municipality at build-out, site-specific projects or issue specific analysis.



Lifecycle Costing



Bottom Line Net Loss or Net Gain

COMPARE TOTAL PROJECT (Study Area)			
Revenues - Cost =			
\$ 116,633,500			
RESIDENTIAL			
Revenue per Residential Unit	Cost per Residential Unit	Total Revenue per capita	Total Life Cycle Cost per Capita
\$ 64,326	\$ 68,781	\$ 18,843	\$ 20,149
Compare Total Revenue - Total Life Cycle Cost per Residential Unit =			
\$ 849,034,750			
NON-RESIDENTIAL- Total Land			
Total Revenue from all Non-Residential Land	Total Cost from all Non-Residential Land	Total Revenue per land Area (acre)	Total life Cycle Cost per land Area (acre)
\$ 339,184,475	\$ 163,735,730	\$ 7,320	\$ 3,534
Compare Total Revenue - Total Life Cycle Cost per Non-Residential Land =			
\$ 1,024,552,277			
NON-RESIDENTIAL- Income producing Land			
Total Revenue from all Non-Residential Land	Total Cost from all Non-Residential Land	Revenue per Area (sq ft) Income-producing Land	Cost per Area (sq ft) Income-producing Land
\$ 339,184,475	\$ 163,735,730	\$ 3.38	\$ 1.63
Compare Total Revenue - Total Life Cycle Cost per Non-Residential Land =			
\$ 175,448,745			

City of Airdrie
Jeff Greene - Manager, Urban Planning

The city's planners developed several different scenarios using the software. "We evaluated our preferred growth option we are a very strong residential community and council was quite pleased to have that insight into future growth. It solidified their vision of how they want the community to grow."

FCM - Newsletter
SUSTAINABLE COMMUNITIES KNOWLEDGE NETWORK
Sharon Boddy, Editor

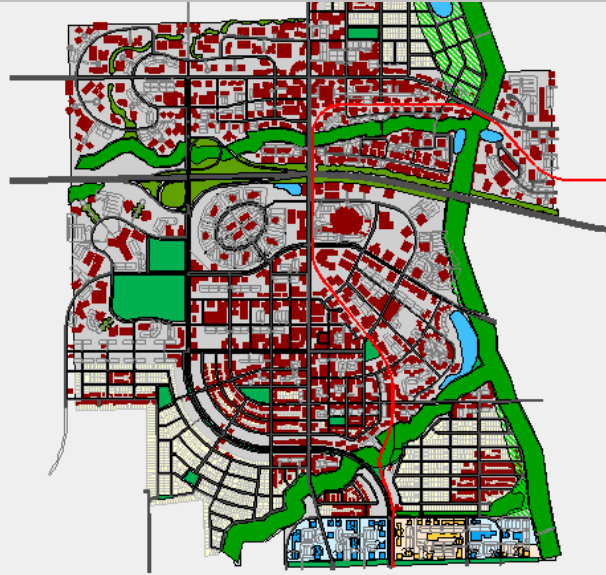
In a nutshell, the software allows city planners to see whether the revenues associated with land use will offset the costs. The software calculates the capital, maintenance, operating, and replacement costs of municipal infrastructure as well as all anticipated revenues. The software includes hundreds of indicators and can be adapted to any type of development including land uses that do not typically generate cash revenue, such as recreational land uses, or lands that should be protected for environmental reasons.



Tools for Smart Growth ▪ Growth Management ▪ Lifecycle Costing Financial Sustainability ▪ GIS Visualisation

Interactive software analysis of land use provides detailed financial analysis to achieve sustainability. With InfraCycle Software municipalities can calculate the financial resources needed to realise the vision for your municipality.

InfraCycle provided a solid financial analysis of comprehensive land use plans at build-out, development proposals, redevelopment plans, capital, replacement operating, maintenance costs of infrastructure, community services and revenues.



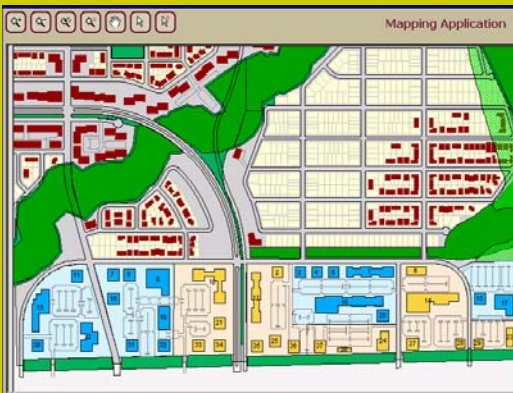
Visualization for Integrated Decision-Making. Change digitized maps of regions, county, township or urban areas.

InfraCycle is scalable and may be used for bottom-line fiscal analysis of

- Urban and Rural Land Use
- Comprehensive Land Use Plans
- Growth Management Strategies
- Secondary Plans
- Plans of Subdivisions
- Site Specific Studies
- Redevelopment Plans
- Transportation Corridors
- Economic Corridor Studies

Plan: Corush Sunderland Wright

Scenario 1 - retail



Scenario 2 - office intensification



Change land uses on a digital map, intensify land uses at a transit station and calculate future revenues, the lifecycle cost of infrastructure, community services and determine bottom-line fiscal sustainability.

Extend the fiscal capability of InfraCycle by adding visualisation available through GIS tools such as **CommunityViz** and other extensions to **ESRI** products